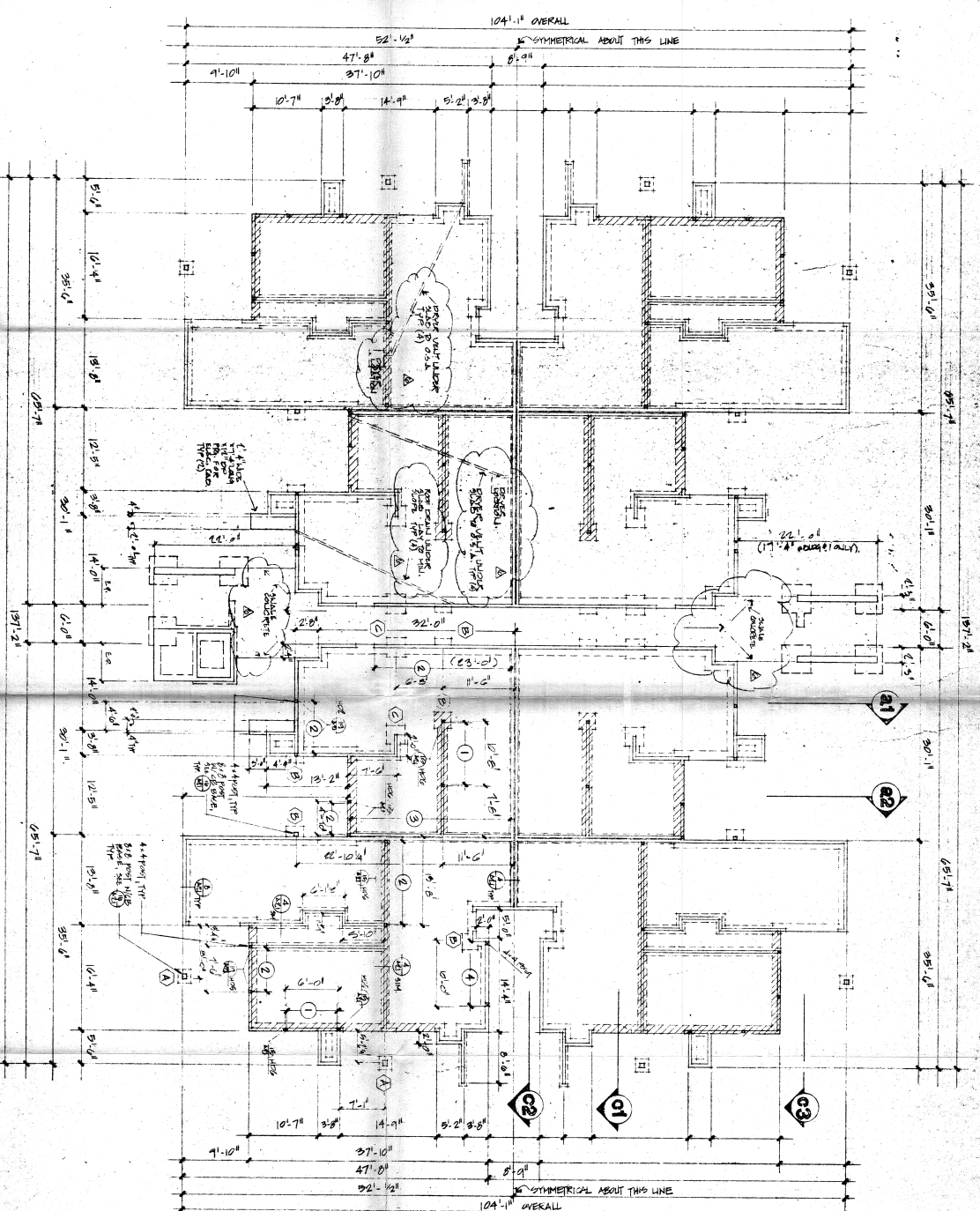


unit c unit a unit a unit c

UNITED TRUCK AND AUTO UNIT PORTLAND TRUCK AND AUTO UNIT



FAD FOOTING SCHEDULE

AREA	SIZE	THICKNESS	REINFORCEMENT
A	2'-0"	18"	2-#4
B	2'-0"	18"	3-#4
C	3'-0"	24"	3-#4

SILL BALKING SCHEDULE

AREA	ANCHOR BOLTING
1	1/2" A, B, C @ 12" O.C.
2	1/2" A, B, C @ 12" O.C.
3	1/2" A, B, C @ 12" O.C.
4	1/2" A, B, C @ 32" O.C.

NOTES

CONCRETE SLAB - THE ALL UNITS - EARTH.

3" SAND FILL WITH 10% GRAVEL.

CONCRETE FILL.

CONSTRUCTION PLANS

3. STAIR - 15" x 18" x 10" W/4 CONT. T&B.

CROSS-HATCHED FOOTINGS REQUIRE 2-#4 CONT. T&B.

CONCRETE PARTS ON GRADE BY SUBCONTRACTOR.

Building A - FOUNDATION PLAN 1/8" = 1'-0"

CRAIG COMES ASSOCIATES ARCHITECT

1535 MONROVIA AVENUE NEWPORT BEACH, CALIF. AREA CODE 714-645-8040

JOHN DATE DRAWN OWNER REV. 1 2 3 4 5 6 7 8 9 10 11 12

STATION TITLE